

# 'Rendering Techniques'

Year 8 Art & Design

Project 2. ( Skills Building )

Formal

LINE



Colour  
Primary, Secondary, Tertiary.

IS A DOT YOU TAKE FOR A WALK...



FORM  
The 3 Dimension of an object



Tone

Texture

The way surface will feel

Gradient

Elements

The Formal Elements are the parts used to make a piece of artwork.

The art elements are Line, Shape, Colour, Texture, Pattern, Form and Tone.

They are often all used together and how they are organised in a piece of art determines what the finished piece will look like.

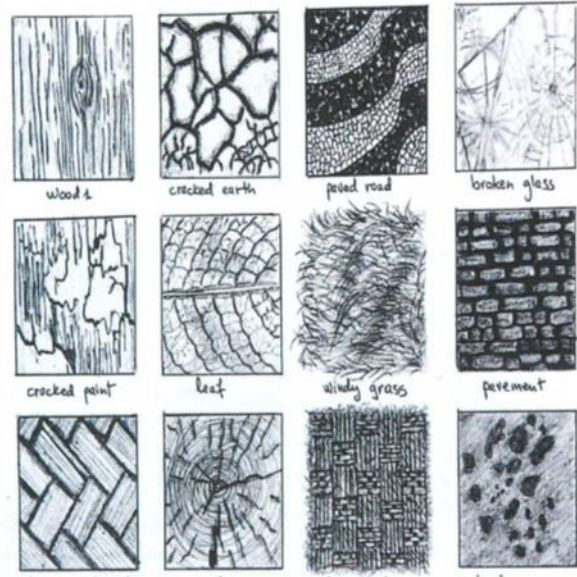
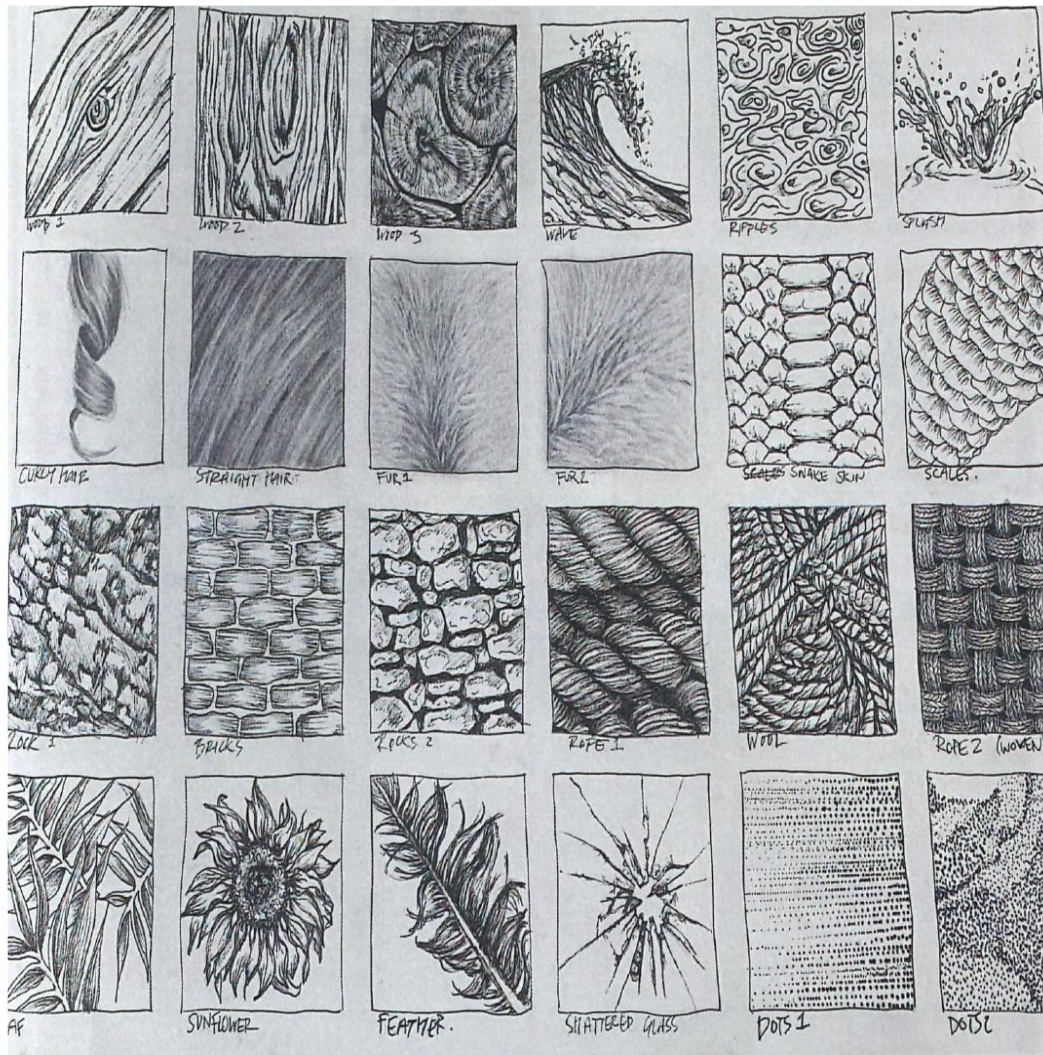
**Rendering means :- How we can make objects seem like they are made out of a particular material !**



**Materials:** You will need A4 paper to complete these tasks-A black Biro/pen, Pencil.

There are 50 points in total for this project!

# Rendering Study 'Using Texture, Tone and Form'



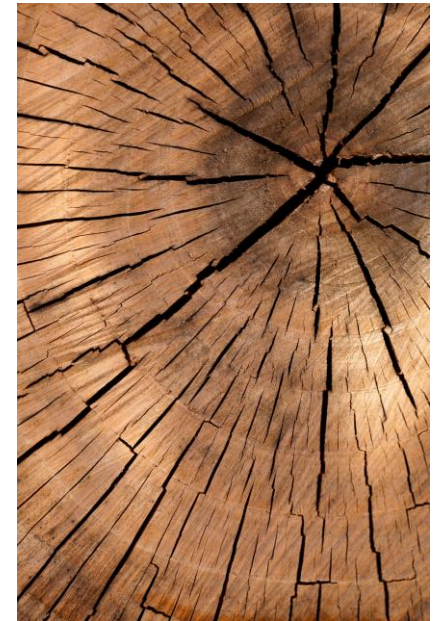
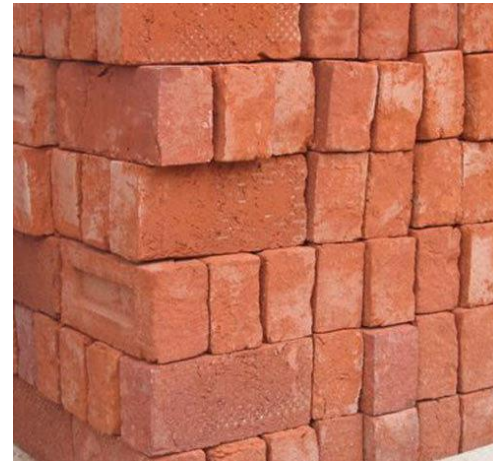
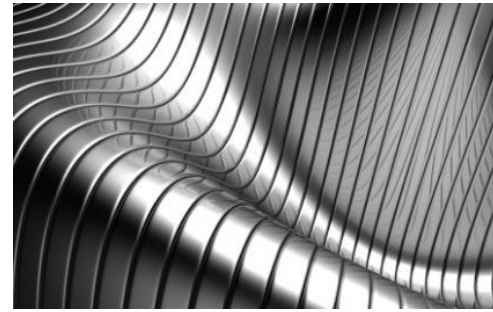
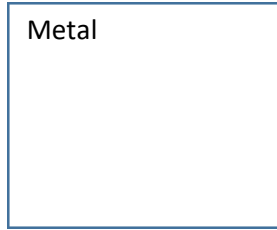
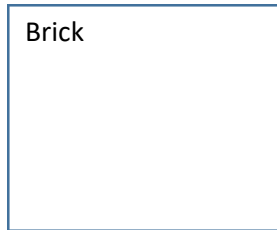
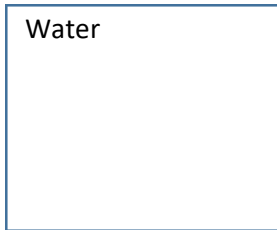
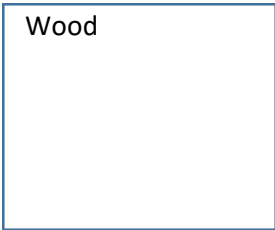
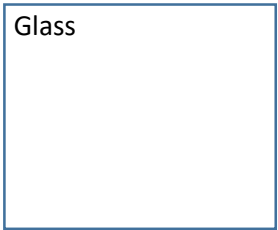
How many of these textures do you recognise?

Look closely at the way LINE has been used in these drawings to create the TEXTURE of the object.

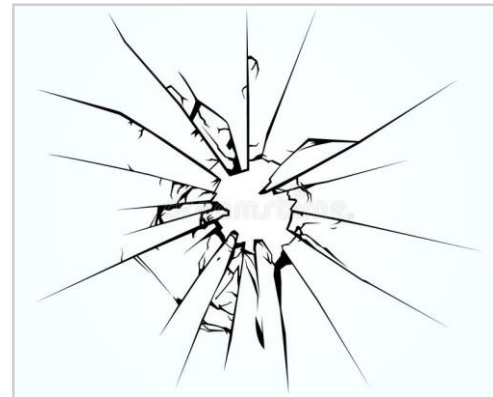
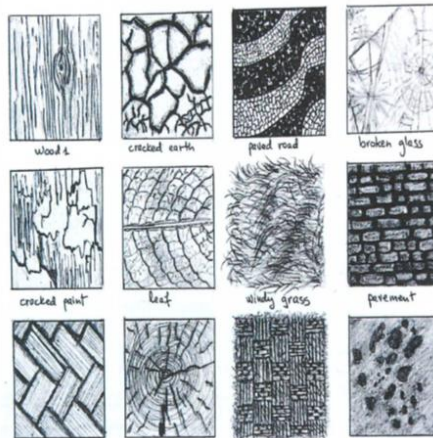
A black biro or a sharp pencil work well in these kind of renderings.

# Applying the textures !...

Now look at the sample textures opposite, we are going to put your rendering knowledge now into practise. Draw out 5 boxes and have a go at rendering to make the boxes look like the images opposite :-



Work out where your dark, medium and light areas are. Now have a go at shading (rendering) them to make them look 3d, they will go from being line drawings to actually looking like the textures.



25 Points

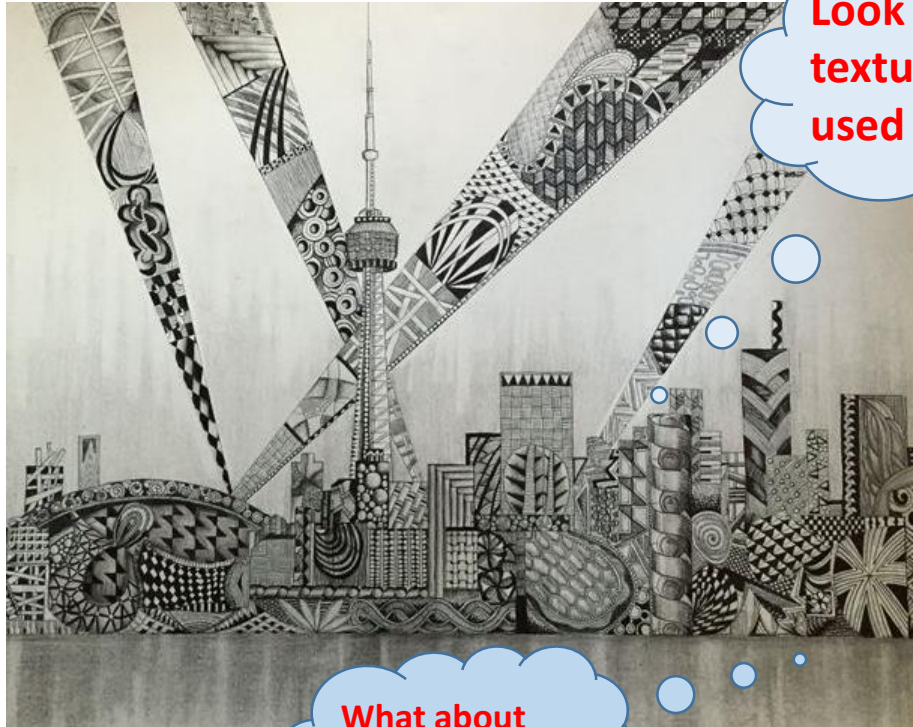
**Remember to press on with your pen or pencil- you need to be bold !**

# Rendering: practise piece

**final Piece-** Here are some images of buildings, look how they have been rendered (shaded). **Produce your own rendered building using any textures that you like. You can use the images on this slide or find a building of your own. Try to use your rendering skills to help you.**

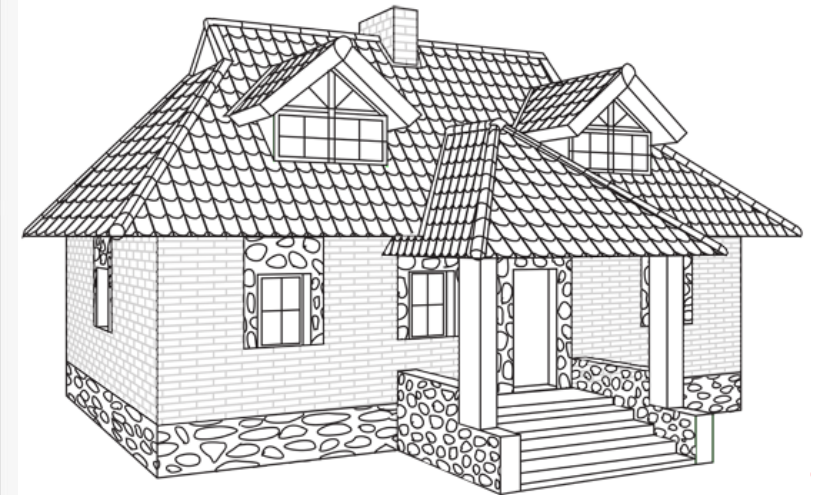
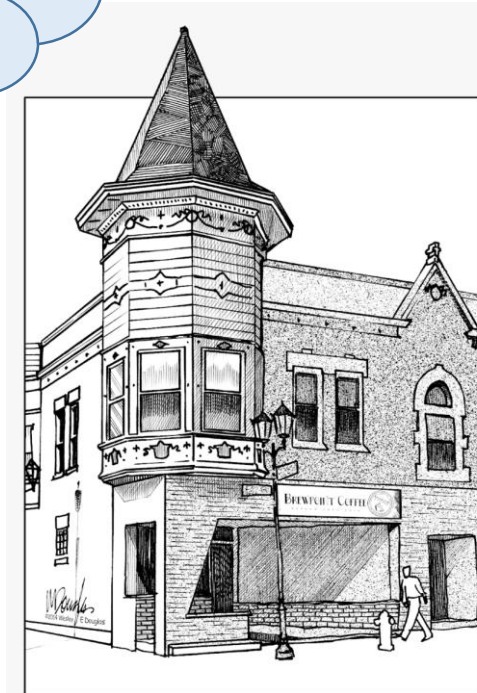
What is your design going to be ? It doesn't have to be one of these buildings.

More points will be awarded if you draw out your own building first!



Look at how the textures have been used here !

What about doing a skyline !



25 Points